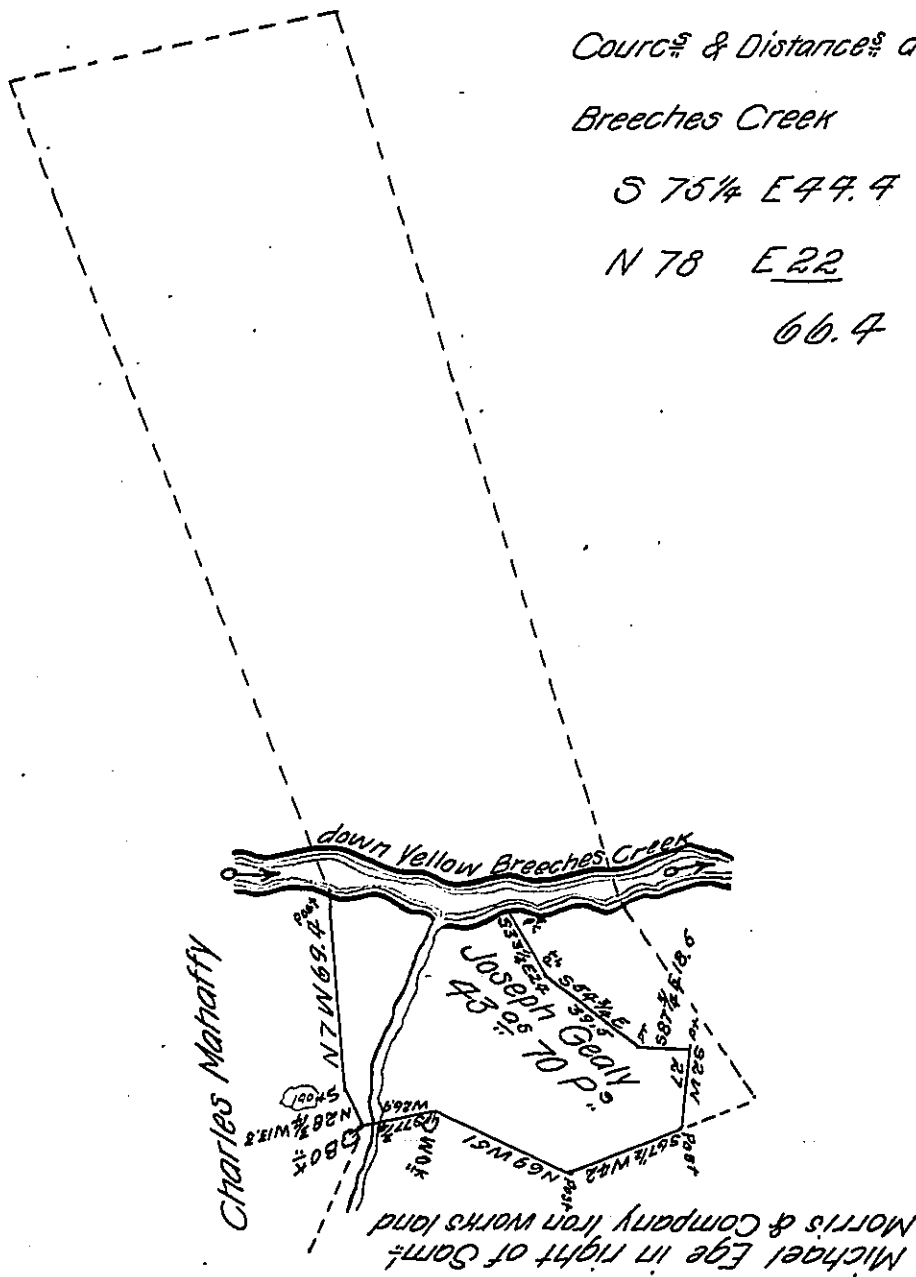


Courses & Distances down Yellow  
 Breeches Creek  
 S 75 1/4 E 44.4  
 N 78 E 22  
 66.4



*Draught of a Tract of land situate in South Middleton township Cumberland County  
 Containing forty three Acres & seventy perches & Allowance of six p. C. for roads &c. It  
 being part of 222 1/2 A. & Allowance which being Surveyed in pursuance of a Warrant granted  
 to Joseph Gealy dated February the 9th Anno 1750 Surveyed & Divided June the 4th Anno  
 Domini 1823*

*To Samuel Cochran Esquire  
 Surveyor General*

*Saml. Ruby  
 D.S.*

IN TESTIMONY that the above is a copy of the original remaining on file in the Department of Internal Affairs of Pennsylvania, made conformably to an Act of Assembly approved the 16th day of February, 1833, I have hereunto set my Hand and caused the Seal of said Department to be affixed at Harrisburg, this eighteenth day of November 1904

*Isaac R. Brown*  
 Secretary of Internal Affairs.